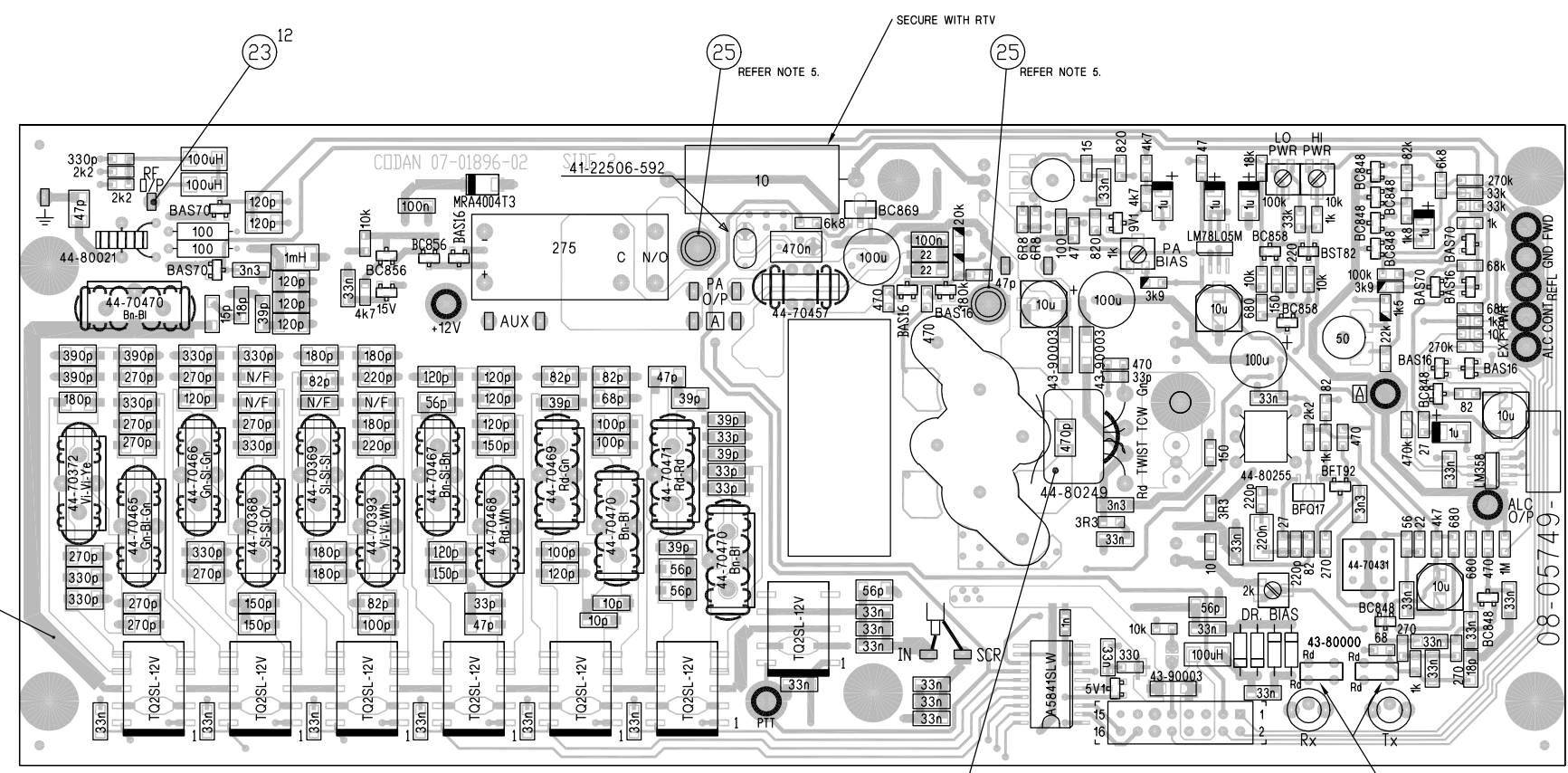


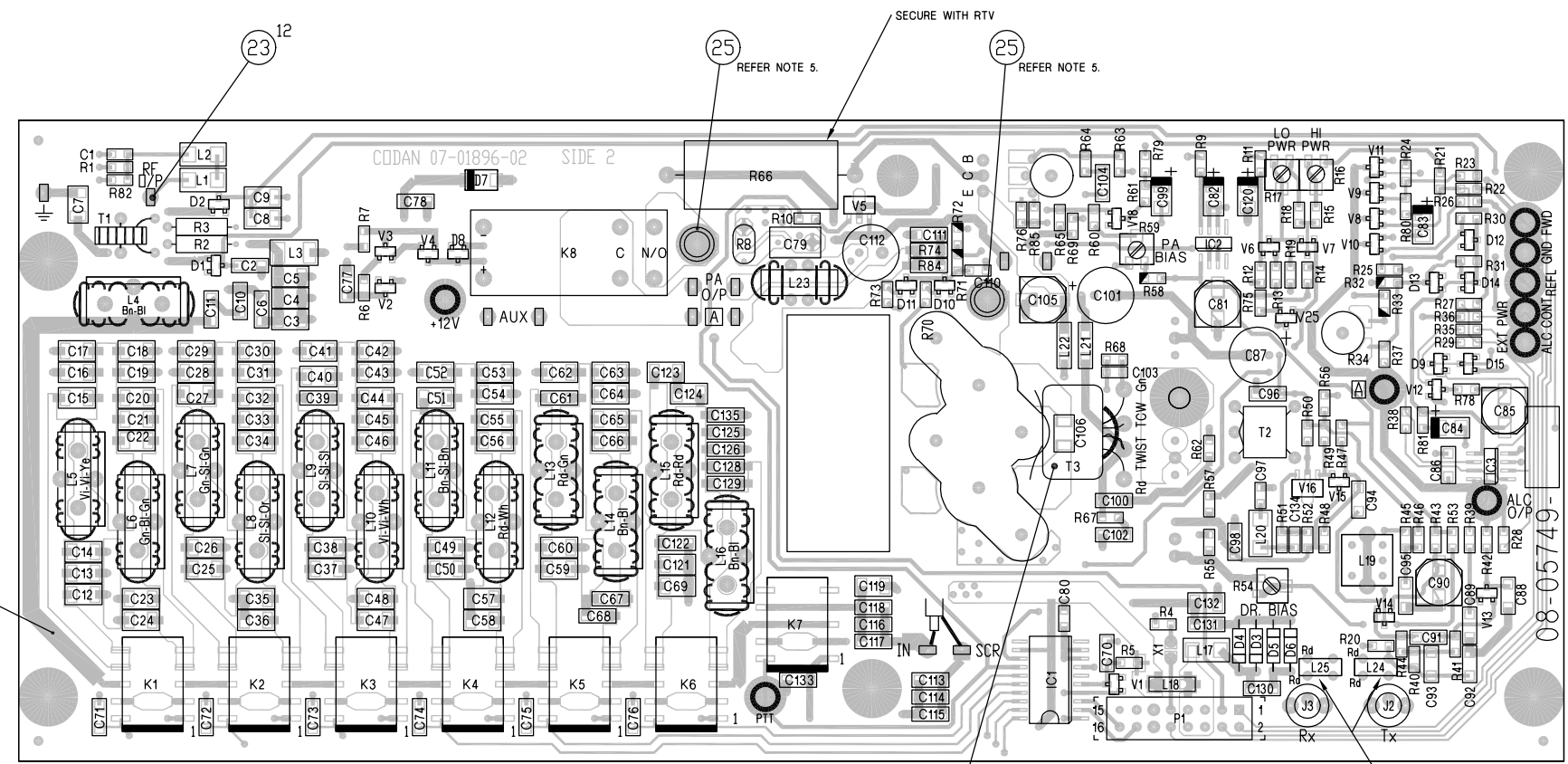
DO NOT SCALE

ISSUE B:
 C125,C126 WERE 56p
 C135 ADDED
 D7 WAS 1N4004
 R54 WAS 1k
 V17,V21 & V22 WERE
 SHOWN ON SHT 1.
 NOTE 2 DELETED SO
 NOTE 2 WAS 3,
 NOTE 3 WAS 4,
 NOTE 4 WAS 5,
 NOTE 5 ADDED.
 NOTE 4 CHANGED.
 NOTE ADDED TO R66
 & T3
 C/R 26795
 NJA 21-11-00



COMPONENT VALUES

SECURE WITH RTV
 REFER NOTE 4
 REFER NOTE 3



COMPONENT REFERENCE DESIGNATORS

SECURE WITH RTV
 REFER NOTE 4
 REFER NOTE 3

- NOTES:
1. RESISTORS SHOWN ARE 1% TOLERANCE.
 2. DIODES ARE 23-10001, OR EQUIVALENT, UNLESS OTHERWISE STATED.
 3. ASSEMBLE L24 & L25 WITH RED WIRES AS SHOWN.
 4. T3 IS FITTED OVER C106 AND SECURED WITH RTV.
 5. USE AVDEL RIVET MACHINE TO FIT ITEM 25.

SHEET	ASSEMBLY	T4	C107	C108
1 & 4	08-05749-001	44-80256	180p	180p
2 & 4	08-05749-002	44-80256	180p	180p
3 & 4	08-05749-003	44-80265	330p	330p

PCB : 07-01896-02
 ASSY : REFER TABLE

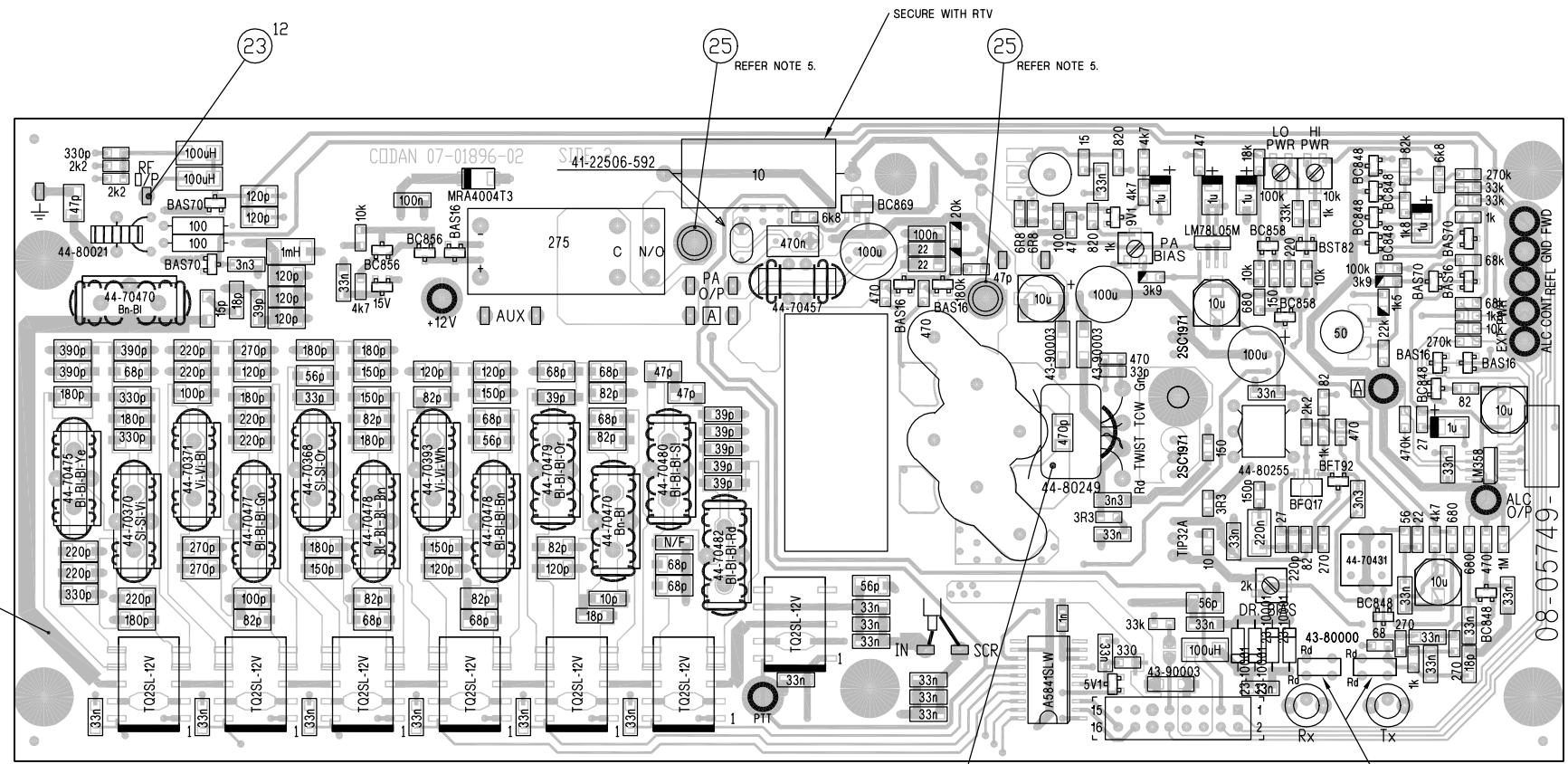
FILE No.
 08\05749A_B.DWG

	DRN	C G	SCALE	2:1	© CODAN PTY LTD. A.C.N. 007 590 605. 1999 TITLE PA AND FILTER PCB ASSEMBLY (26.5MHz)
	MATERIAL	CHKD	NJA	DATE	
FINISH	APPD		TOLERANCES	UNLESS OTHERWISE STATED	DRAWING/DOC NO. 08-05749
			2 PLACES DEC.	±0.25	
			1 PLACE DEC.	±0.5	ISS B
			0 PLACE DEC.	±1	
			ANGULAR	±2*	SHT. 1 OF 4

DIMENSIONS IN mm

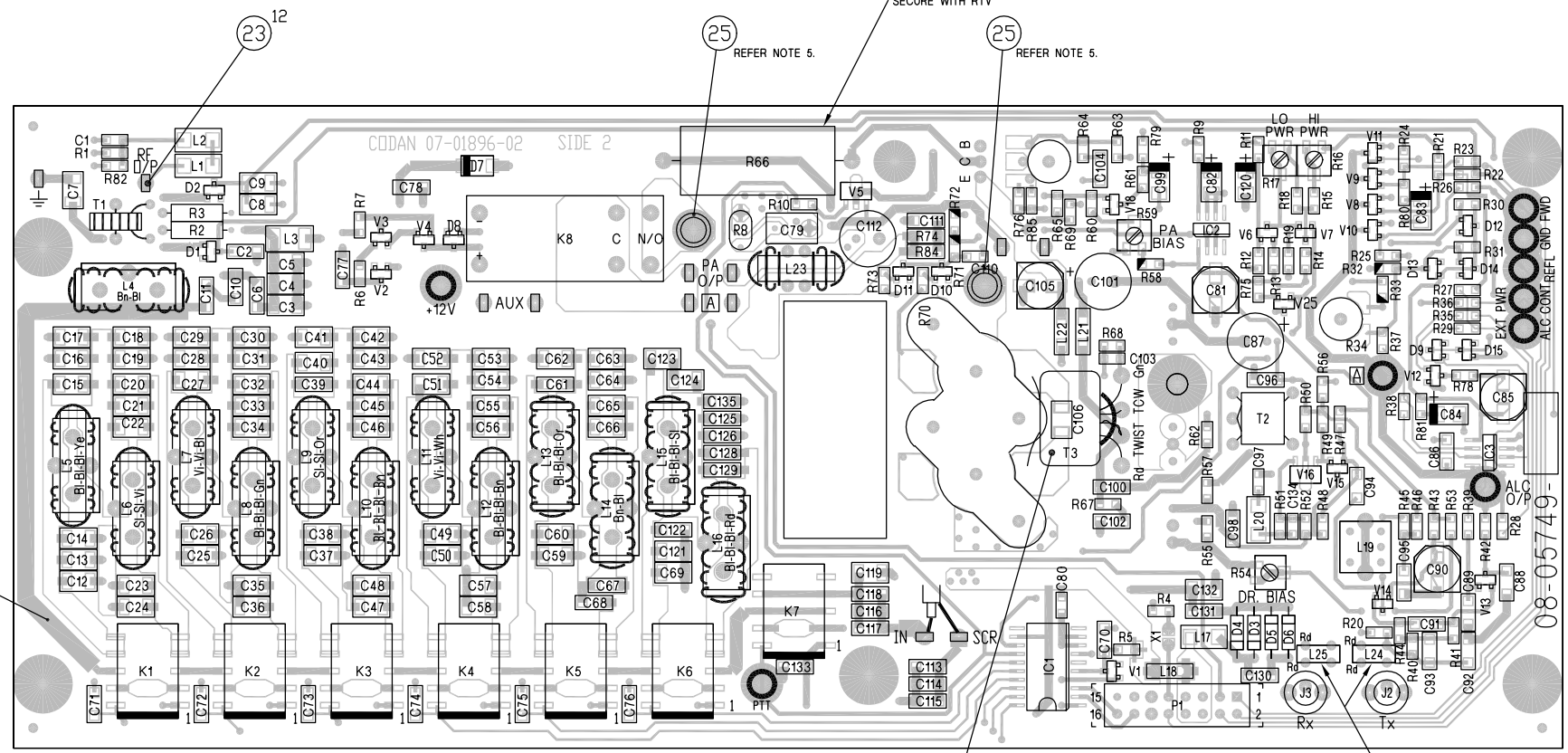
DO NOT SCALE

A
B
C
D
E
F
G
H



COMPONENT VALUES


SECURE WITH RTV REFER NOTE 4
REFER NOTE 3



COMPONENT REFERENCE DESIGNATORS

SECURE WITH RTV REFER NOTE 4
REFER NOTE 3



ISSUE B:
C28,C29,C33 WERE 180p
C30,C34,C52 WERE 330p
C31,C32,C62 WERE 100p
C53,C126 WERE 56p
C63 WAS 120p
C125 WAS 68p
C54,C64 WERE N/F
C135 ADDED
D7 WAS 1N4004
R54 WAS 1k
V17,V21 & V22 WERE
SHOWN ON SHT 1.
NOTE 2 DELETED SO
NOTE 3 WAS 3.
NOTE 3 WAS 4.
NOTE 4 WAS 5.
NOTE 5 ADDED.
NOTE 4 CHANGED.
NOTE ADDED TO R66
& T3.
C/R 26795
NJA 21-11-00

- NOTES:
1. RESISTORS SHOWN  ARE 1% TOLERANCE.
 2. DIODES ARE 23-10001, OR EQUIVALENT, UNLESS OTHERWISE STATED.
 3. ASSEMBLE L24 & L25 WITH RED WIRES AS SHOWN.
 4. T3 IS FITTED OVER C106 AND SECURED WITH RTV.
 5. USE AVDEL RIVET MACHINE TO FIT ITEM 25.

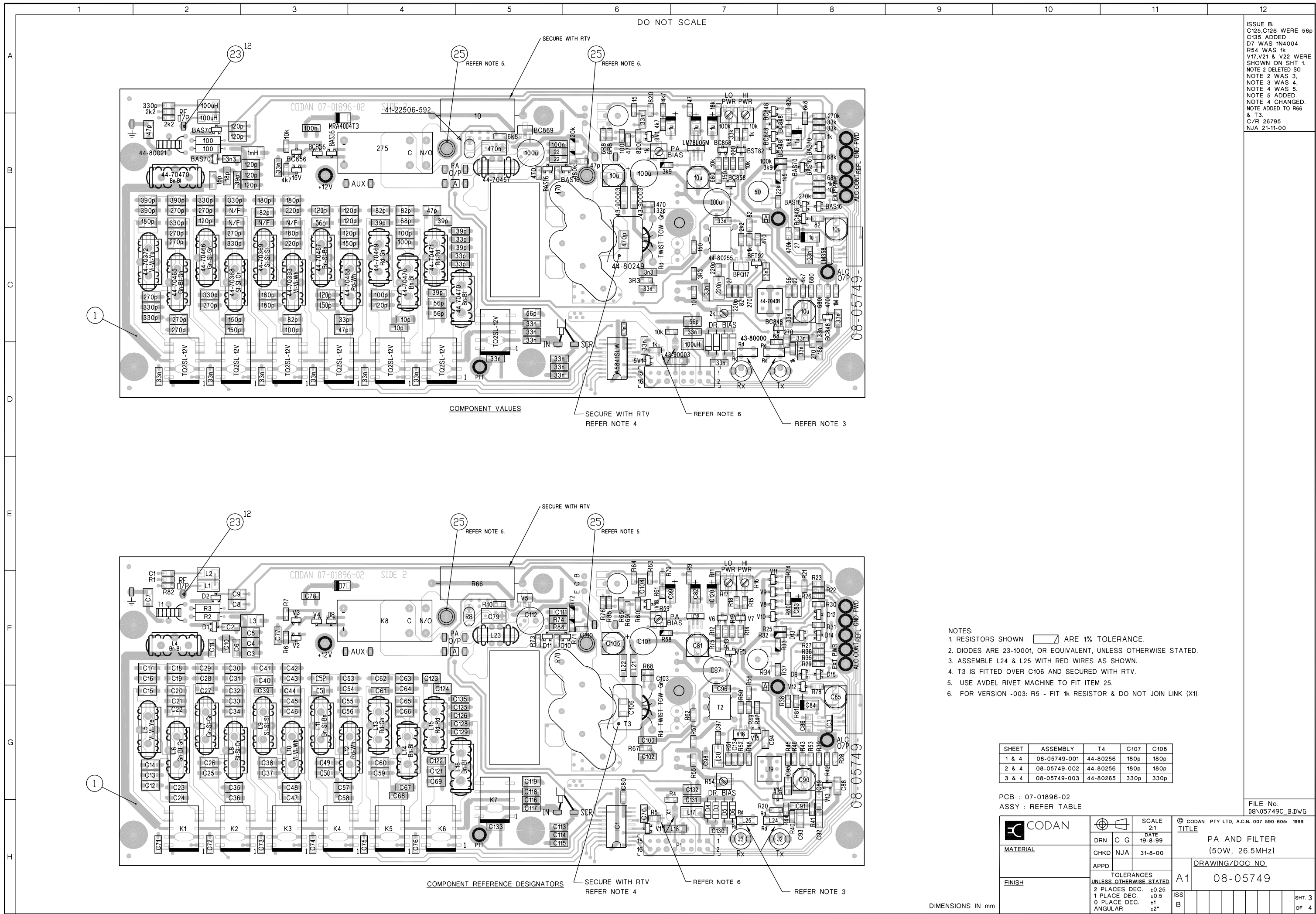
SHEET	ASSEMBLY	T4	C107	C108
1 & 4	08-05749-001	44-80256	180p	180p
2 & 4	08-05749-002	44-80256	180p	180p
3 & 4	08-05749-003	44-80265	330p	330p

PCB : 07-01896-02
ASSY : REFER TABLE

FILE No.
08\05749_B.DWG

 CODAN	 SCALE 2:1	© CODAN PTY LTD, ACN. 007 590 805. 1999 TITLE PA AND FILTER PCB ASSEMBLY (30MHz)
	DRN C G DATE 19-8-99	CHKD NJA 31-8-00
MATERIAL CHKD NJA 31-8-00	APPD	TOLERANCES UNLESS OTHERWISE STATED 2 PLACES DEC. ±0.25 1 PLACE DEC. ±0.5 0 PLACE DEC. ±1 ANGULAR ±2°
FINISH	A1	ISS B

DIMENSIONS IN mm



DO NOT SCALE

ISSUE B:
 C125, C126 WERE 56p
 D7 WAS IN4004
 R54 WAS 1k
 V17, V21 & V22 WERE
 SHOWN ON SHT 1.
 NOTE 2 DELETED SO
 NOTE 2 WAS 3,
 NOTE 3 WAS 4,
 NOTE 4 WAS 5.
 NOTE 5 ADDED.
 NOTE 4 CHANGED
 NOTE ADDED TO R66
 & T3.
 C/R 26795
 NJA 21-11-00

COMPONENT VALUES

COMPONENT REFERENCE DESIGNATORS

- NOTES:
1. RESISTORS SHOWN ARE 1% TOLERANCE.
 2. DIODES ARE 23-10001, OR EQUIVALENT, UNLESS OTHERWISE STATED.
 3. ASSEMBLE L24 & L25 WITH RED WIRES AS SHOWN.
 4. T3 IS FITTED OVER C106 AND SECURED WITH RTV.
 5. USE AVDEL RIVET MACHINE TO FIT ITEM 25.
 6. FOR VERSION -003: R5 - FIT 1k RESISTOR & DO NOT JOIN LINK (X1).

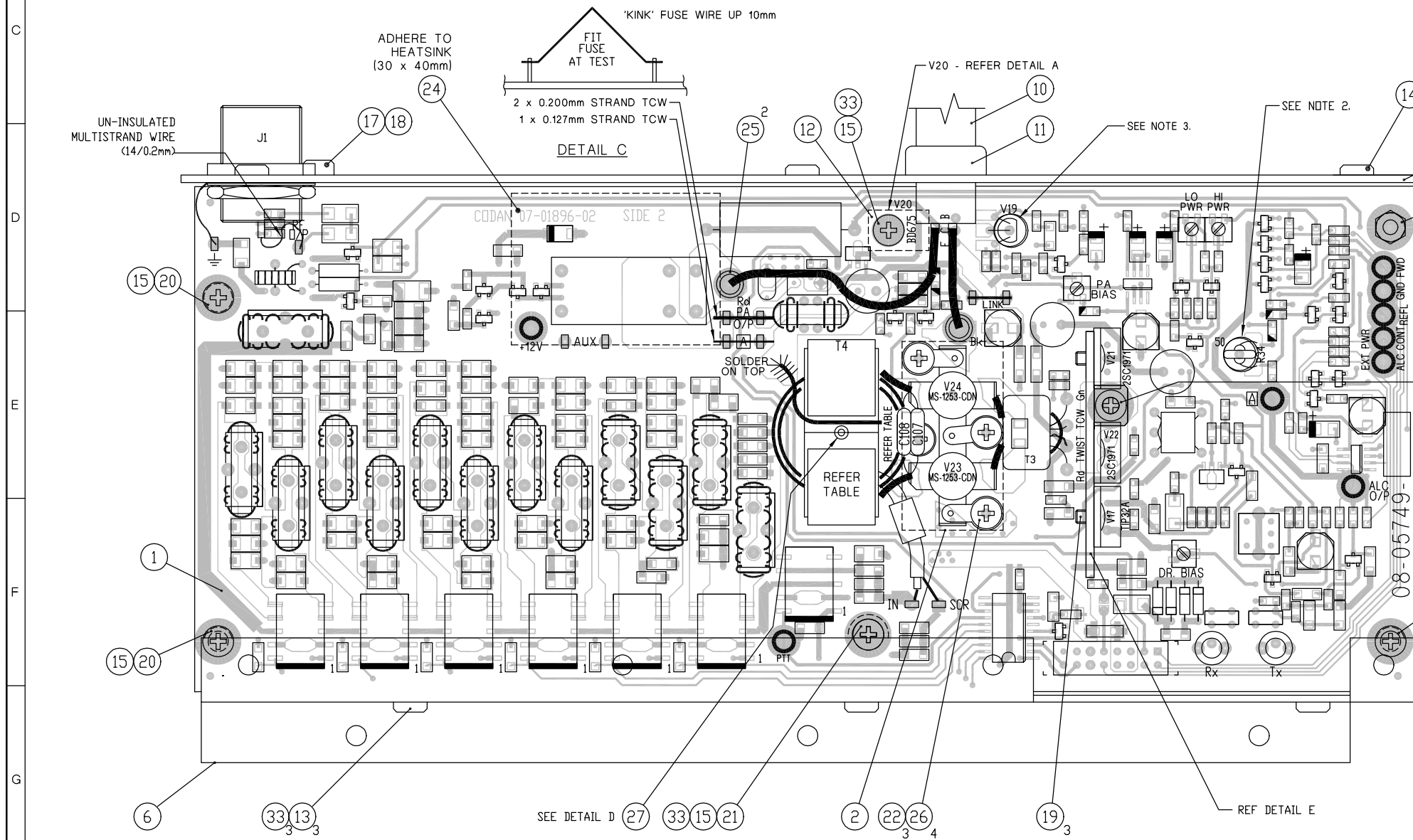
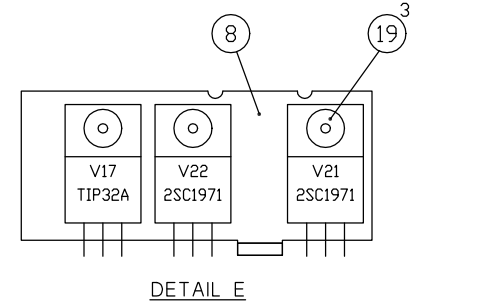
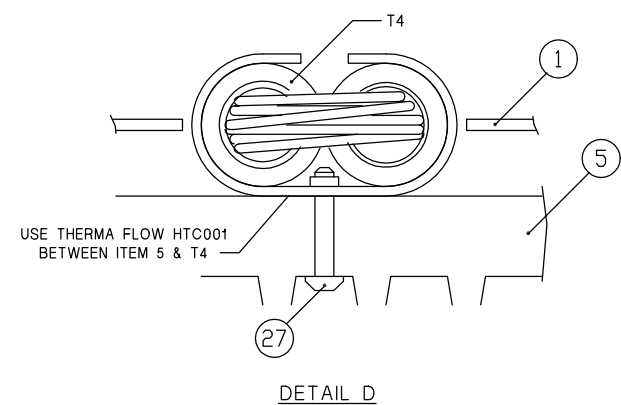
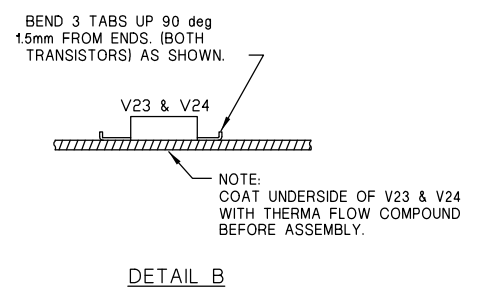
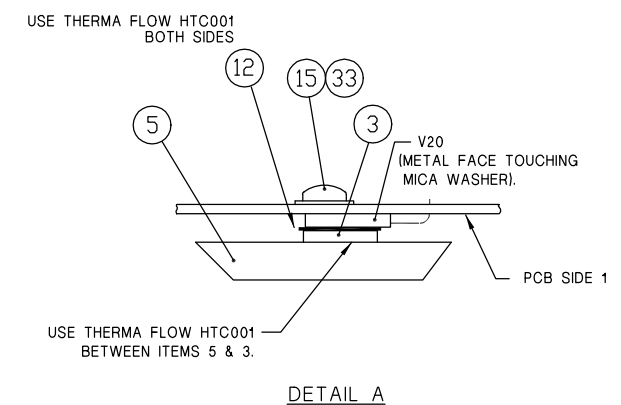
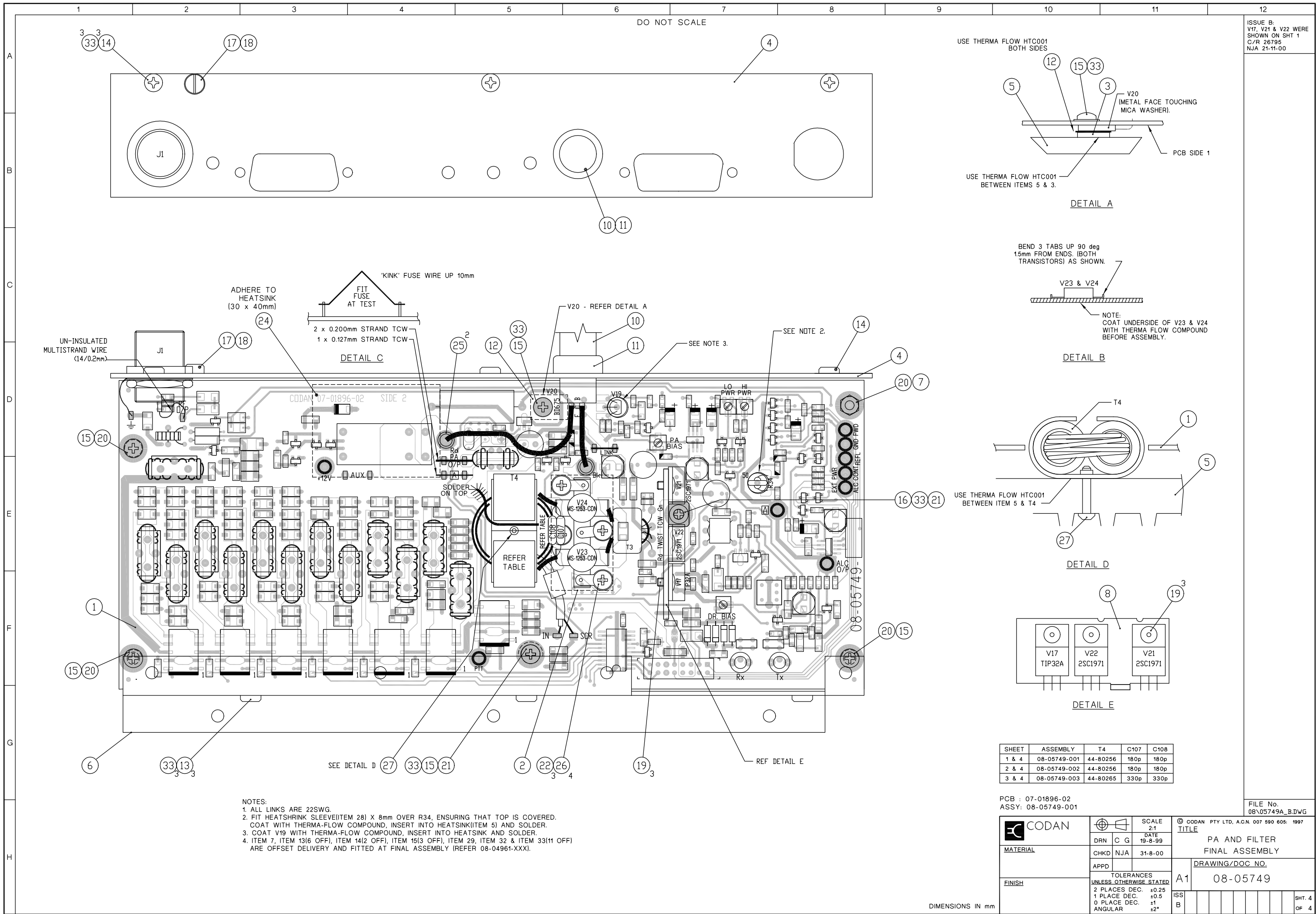
SHEET	ASSEMBLY	T4	C107	C108
1 & 4	08-05749-001	44-80256	180p	180p
2 & 4	08-05749-002	44-80256	180p	180p
3 & 4	08-05749-003	44-80265	330p	330p

PCB : 07-01896-02
 ASSY : REFER TABLE

FILE No.
 08\05749C_B.DWG

	SCALE 2:1		© CODAN PTY LTD, A.C.N. 007 590 605. 1999 TITLE PA AND FILTER (50W, 26.5MHz)
	DRN	C G	
MATERIAL	CHKD	NJA	31-8-00
FINISH	APPD	DRAWING/DOC NO. A1 08-05749	
TOLERANCES UNLESS OTHERWISE STATED			ISS
2 PLACES DEC. ±0.25			SHT. 3
1 PLACE DEC. ±0.5			
0 PLACE DEC. ±1			
ANGULAR ±2°			OF 4

DIMENSIONS IN mm



- NOTES:
1. ALL LINKS ARE 22SWG.
 2. FIT HEATSHRINK SLEEVE (ITEM 28) X 8mm OVER R34, ENSURING THAT TOP IS COVERED. COAT WITH THERMA-FLOW COMPOUND, INSERT INTO HEATSINK (ITEM 5) AND SOLDER.
 3. COAT V19 WITH THERMA-FLOW COMPOUND, INSERT INTO HEATSINK AND SOLDER.
 4. ITEM 7, ITEM 13(6 OFF), ITEM 14(2 OFF), ITEM 15(3 OFF), ITEM 29, ITEM 32 & ITEM 33(11 OFF) ARE OFFSET DELIVERY AND FITTED AT FINAL ASSEMBLY (REFER 08-04961-XXX).

SHEET	ASSEMBLY	T4	C107	C108
1 & 4	08-05749-001	44-80256	180p	180p
2 & 4	08-05749-002	44-80256	180p	180p
3 & 4	08-05749-003	44-80265	330p	330p

PCB : 07-01896-02
 ASSY : 08-05749-001

	SCALE	2:1	© CODAN PTY LTD. A.C.N. 007 590 605. 1997 TITLE PA AND FILTER FINAL ASSEMBLY
	DATE	19-8-99	
MATERIAL	DRN	C G	DRAWING/DOC NO. 08-05749
	CHKD	NJA	
FINISH	APPD		ISS
TOLERANCES UNLESS OTHERWISE STATED			
2 PLACES DEC. ±0.25			SHT. 4 OF 4
1 PLACE DEC. ±0.5			
0 PLACE DEC. ±1			
ANGULAR ±2°			

DIMENSIONS IN mm